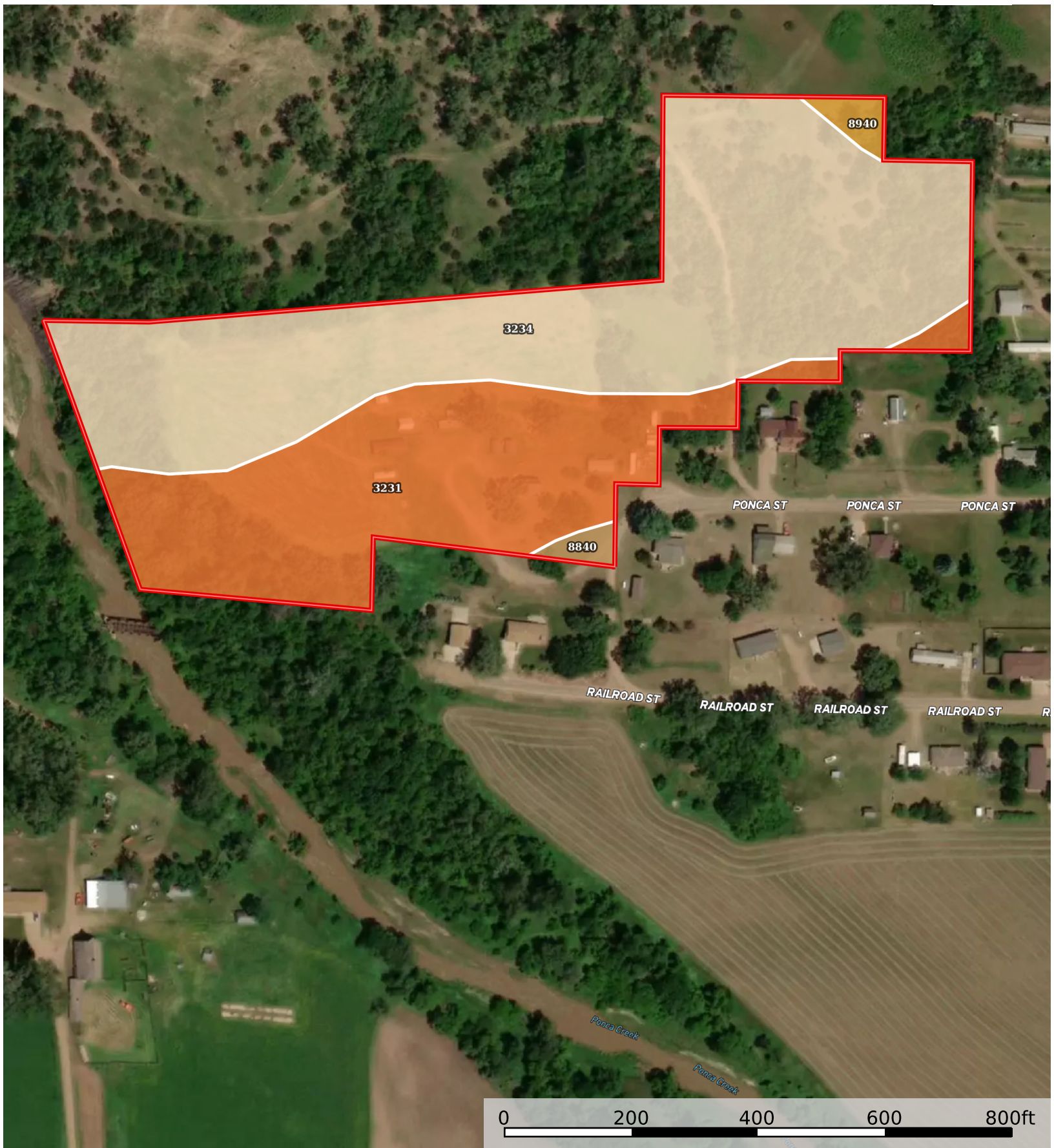



11.83 +/- Acres, Boyd County, NE  
Nebraska, AC +/-



 Boundary

Stacey Stracke



The information contained herein was obtained from sources deemed to be reliable. Land id™ Services makes no warranties or guarantees as to the completeness or accuracy thereof.

Boundary 13.34 ac

SOIL CODE	SOIL DESCRIPTION	ACRES	%	CPI	NCCPI	CAP
3234	Monowi-Bristow silty clays, 11 to 30 percent slopes	8.12	60.87	0	15	6e
3231	Monowi silty clay, 6 to 11 percent slopes	4.92	36.88	0	28	4e
8940	Simeon-Valentine complex, 3 to 30 percent slopes, eroded	0.17	1.27	0	17	6s
8840	Hall silt loam, 0 to 1 percent slopes	0.13	0.97	0	69	2c
TOTALS		13.34(*)	100%	-	20.35	5.22

(\*) Total acres may differ in the second decimal compared to the sum of each acreage soil. This is due to a round error because we only show the acres of each soil with two decimal.

